



VISITING THE JAMES MUSEUM

A guide for people with autism spectrum disorder
and related disabilities.



THE JAMES MUSEUM OF WESTERN & WILDLIFE ART



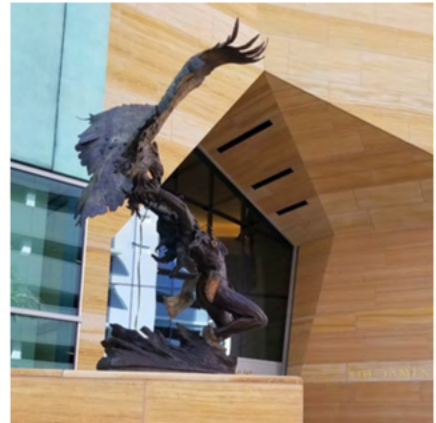
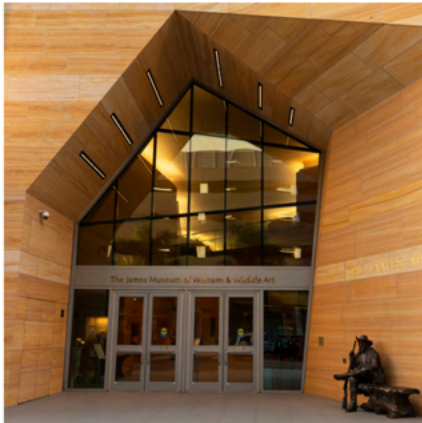
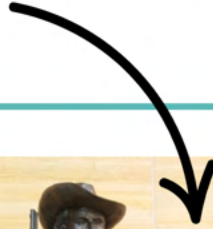
Notes to Caregivers

Before you arrive, please call the museum at 727.892.4200 with any questions or concerns about your visit.

- Tuesday nights are typically the most crowded/busy and will be more overwhelming to the sensory system than any other time.
- Museum Parking is available on Levels 3 & 4 of the automated South Core Parking Garage. Enter the garage behind the museum at 101 1st Ave S, St. Petersburg, FL 33701. The garage rate is \$1/hour during regular operation. *Please note: special event rates vary and may apply.*
- Sensory Kits are available by request at the admissions desk.
- The lighting in the galleries is low and they are typically quiet. Due to the delicate and expensive nature of the collection, the expectation is that there is no touching of art, and patrons are to stand an arm's length away from each piece.
- Restrooms are available on both the first and second floor, including family-friendly options.
- Visitors may bring snacks to eat in the café, but food or drink is not allowed in the galleries.
- There are complimentary lockers available to store purses, backpacks, lunchboxes, etc.
- If you decide to visit the Jewel Box please be aware that if the glass is disturbed it may result in loud alarms going off. Please keep your loved one away from the glass in this room.

Soon we are going to The James Museum of Western & Wildlife Art! The museum has paintings, sculpture, photography and other art that tells the story of the American West.

Meet Buffalo Bill! There is a statue and a bench outside that I can touch to see what it feels like before I go in. I am welcome to pose for a selfie with this statue. Once I am inside, I will not touch any art.





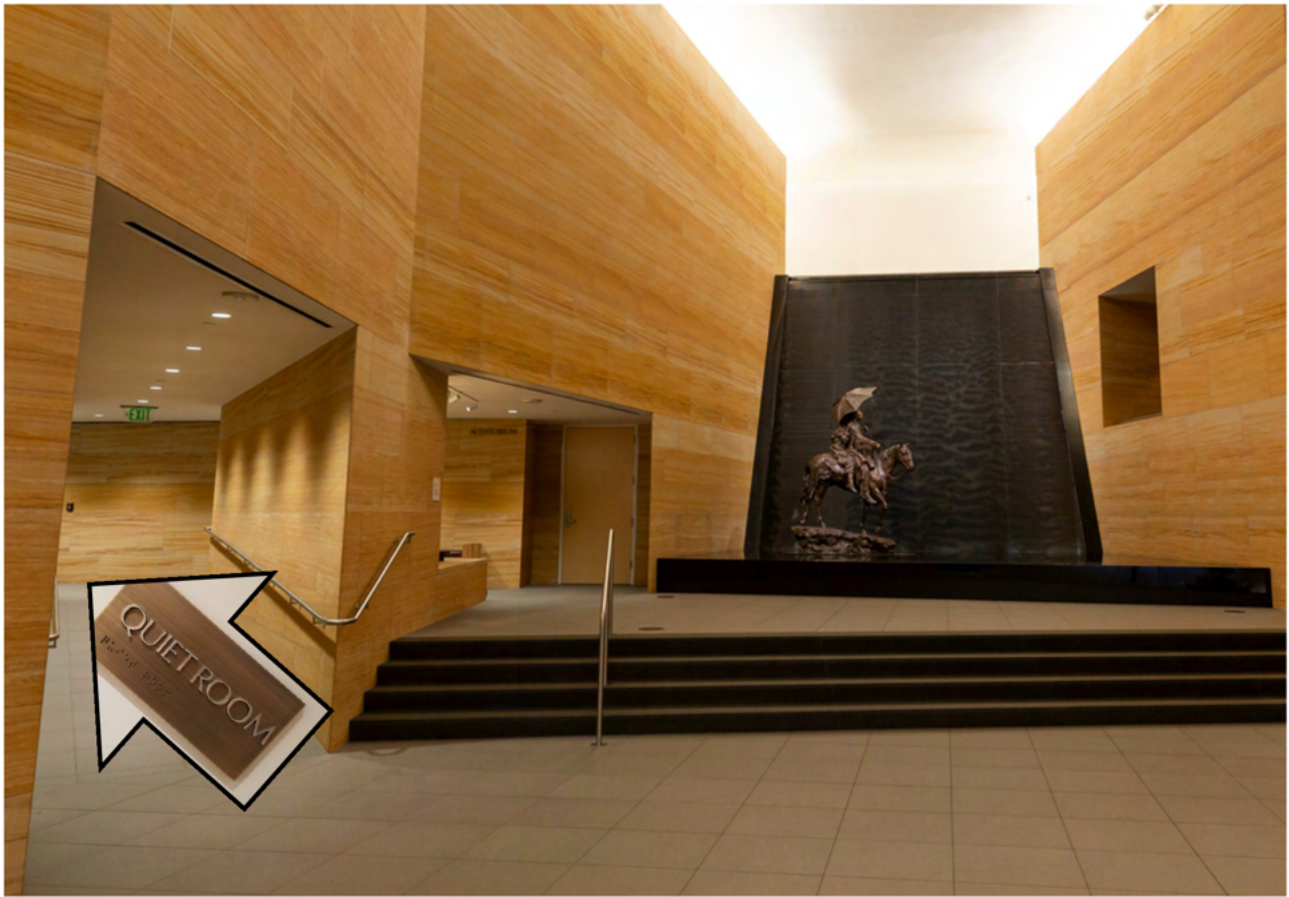
When I enter the building
I will be in the Arroyo
(main lobby).

I will be greeted by a
security guard.



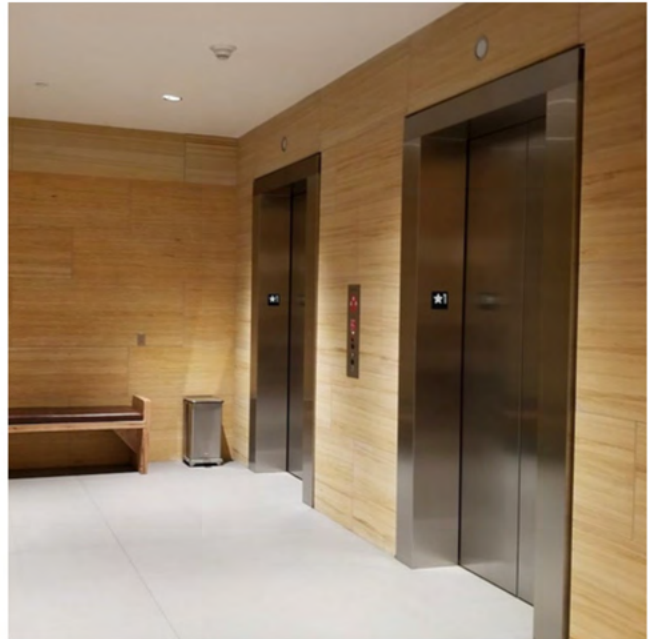
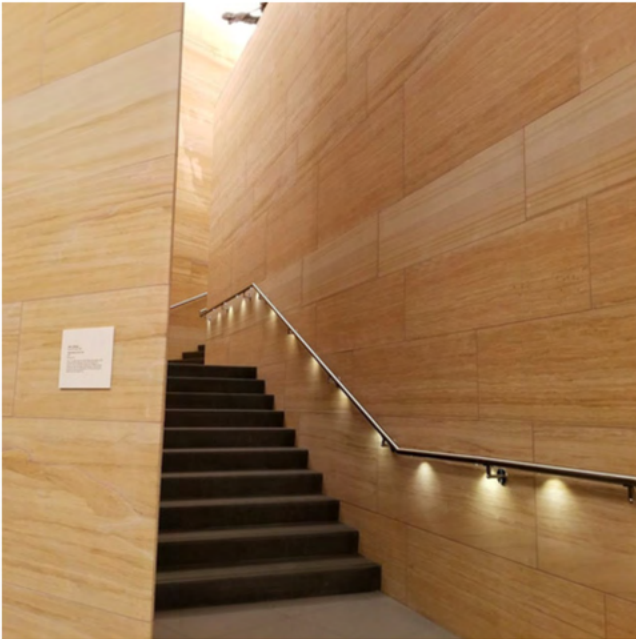
I/We will then check in at the admissions desk.

I will receive a sticker to wear on my shirt or somewhere visible.



To the left of the waterfall, there will be a Quiet Room available for me and my family to sit in if I need a quiet space.

When we leave the Arroyo we will go up the stairs or the elevator to the galleries on the second floor. We will pass a cool water feature (a waterfall) that looks like stairs, but it is not for climbing.



The museum has some rules I will follow to keep myself and the art collection safe. When I enter the galleries I will use my quiet voice. We will not be allowed to touch anything and we will have to stay an arm's length away from the art.

There will be staff members dressed in black with name tags and radios. I can ask them if I have any questions, if I get lost or if I need to use the Quiet Room.

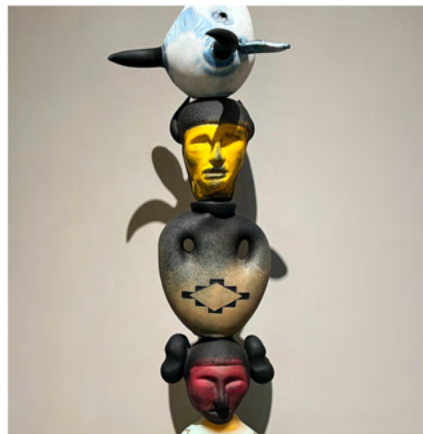


As we go through the museum there will be benches to sit on if I get tired. There will also be rest rooms if I need to use the bathroom, and water fountains if I get thirsty.

There is also a room where we can sit and watch a short movie if I want to take a break from walking. I may not be able to finish the movie and that is okay. I will leave the room with the people I'm with.



There will be several galleries to explore. I will remember to walk and stay with the person or people I came with. Most of the art I will see is about western American culture. Some of the art may be scary or sad. If I want to move to another space I can tell the person or people I am with.





There is so much to see at The James Museum. When we are finished we will leave the same way we came in. There will be a gift shop and a café there. We may or may not be able to visit the gift shop or the café today and that's okay. If I can't go today, maybe I can go the next time I visit.

Thank you for coming to The James Museum!



Written in collaboration with

University of South Florida
Center for Autism and Related Disabilities
813.974.2532
card-usf.fmhi.usf.edu

